

Salus Pro Genetic Sequencer



Salus Pro Platform

Salus Biomed is dedicated to delivering a superior next-generation sequencing (NGS) platform to empower users across research and clinical applications. The Salus Pro genetic sequencer is a flexible, fast, accurate, cost effective, and easy-to-use benchtop sequencer based on the principle of sequencing-by-synthesis (SBS) technology. As well as integrating a number of original technologies such as advanced optics, rapid chemistry systems, high-density chip design, the Salus Pro sequencer contains two sequencing units and supports multiple chip sizes, covering from low, medium and high throughput to meet the needs of different clinical and scientific research scenarios.



CE-IVDR

Key Features

80 M - 2000 M reads / run
Throughput up to
600 Gb per run

Run time
4.8 hr per run

Read length
SE 50 - PE 150
Customizable to PE 300

High data quality
Raw Q30 ≥ 85%

Specifications

The Salus Pro offers multiple chip sizes (80 M, 150 M, 250 M, 500 M, 1000 M, etc.) and supports various sequencing read lengths (SE 50, SE 75, SE 100, PE 75, PE 100, PE 150, PE 250, SE 400, etc.), catering to diverse application needs.

Throughput Read Length	80 M	150 M	250 M	500 M	1000 M*
SE 50	4.0 Gb / 4.8 hr	7.5 Gb / 6 hr	12.5 Gb / 6.6 hr	25.0 Gb / 10.7 hr	/
SE 75	6.0 Gb / 6 hr	11.2 Gb / 7 hr	18.7 Gb / 7.7 hr	37.5 Gb / 13 hr	/
SE 100	8.0 Gb / 7.2 hr	15.0 Gb / 8 hr	25.0 Gb / 9.2 hr	50.0 Gb / 17 hr	/
PE 75	/	/	/	75.0 Gb / 24 hr	150 Gb / 26 hr
PE 100	/	/	/	100 Gb / 31 hr	100 Gb / 33 hr
PE 150	24.0 Gb / 20 hr	45.0 Gb / 24 hr	75.0 Gb / 25 hr	150 Gb / 43 hr	300 Gb / 45 hr
PE 250	40.0 Gb / 40 hr	75.0 Gb / 45 hr	/	/	/
SE 400	32.0 Gb / 30 hr	60.0 Gb / 33 hr	/	/	/

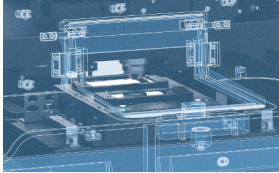
The above sequencing time is based on the sequencing of the standard library with double-end barcode (8+8);
The data throughput mentioned above is for a single chip; Salus Pro can run two chips simultaneously;
The sequencing time mentioned above is the theoretical sequencing time for a single chip;
The 1000 M chip is expected to be shipped in the Q4 of 2024.

Sequencing Methods	Key Applications	Data Volume Per Sample	Read Length	80 M Samples / Run	150 M Samples / Run	250 M Samples / Run	500 M Samples / Run	1000 M Samples / Run
Lowpass Whole Genome Sequencing	NIPT	5 M reads	SE 50	16 / 32	30 / 60	50 / 100	100 / 200	-
	CNV-seq / PGT-A	5 M reads	SE 75	16 / 32	30 / 60	50 / 100	100 / 200	-
Small Whole-Genome Sequencing	Shotgun Metagenomics	20 M reads	SE 75	4 / 8	8 / 16	12 / 25	25 / 50	-
	Microbe, Virus WGS	1 Gb	PE 150	24 / 48	45 / 90	75 / 150	150 / 300	300 / 600
Targeted Resequencing (Target Enrichment / Amplicon Sequencing)	Pathogen Targeted NGS (tNGS)	1 M reads	SE 50	80 / 160	150 / 300	250 / 500	500 / 1000	-
	Small Panel Sequencing	1 Gb	PE 150	24 / 48	45 / 90	75 / 150	150 / 300	300 / 600
	Large Panel Sequencing	10 Gb	PE 150	3 / 6	5 / 10	7 / 15	15 / 30	30 / 60
	WES	12 Gb	PE 150	2 / 4	3 / 7	6 / 12	12 / 25	25 / 50
Methylation Sequencing	Multi-cancer Early Detection	4 Gb	PE 150	6 / 12	9 / 21	18 / 36	36 / 75	72 / 150
RNA Sequencing	Bulk RNA-seq	6 Gb	PE 100	2 / 5	5 / 10	8 / 16	16 / 32	32 / 64
	Single-Cell RNA Sequencing	20 - 50k reads/cell (Capture 10000cells)	PE 50 + 100	-	-	-	1 / 5	2 / 10
Whole Genome Sequencing	Human Whole-Genome Sequencing (30X)	100 Gb	PE 150	-	-	-	1 / 3	2 / 6

*Up to 2 chips per run

Tech Innovations

R&D capabilities



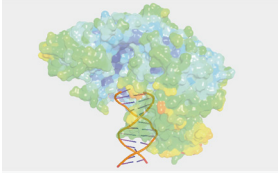
New Optical System

100% larger field of view and 50% less imaging time compared with commercial lenses



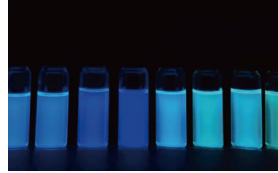
New Chips

Robustness and better reaction efficiency



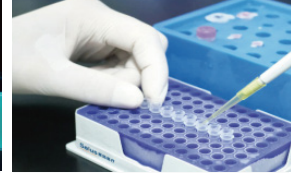
New Enzymes

Read length up to PE 300 with better quality



New Fluorescent Dye

Patented synthetic dyes to optimize imaging performance



New Chemistry

In fast mode, the SE 75 + 8 + 8 test for mNGS can be completed within 7 hours

Data Demonstrations

NIPT

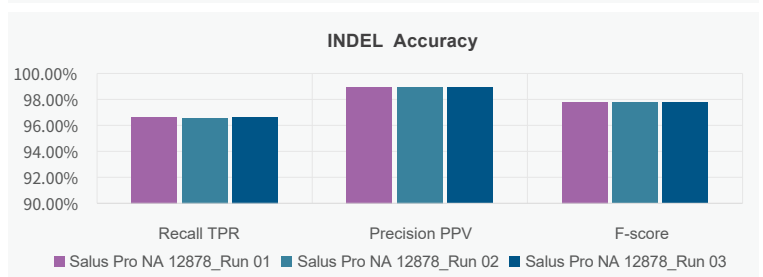
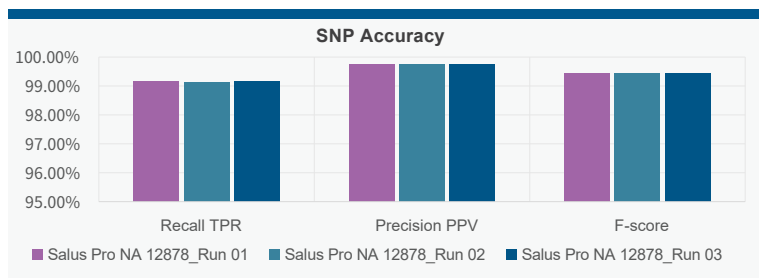
Sample: NIPT Standard Samples

Sample Code	Reads	Average Coverage (%)	Sequencing Depth	GC-content	Results from Salus Pro	Reference Results	Consistency
1	12372305	14.82	0.190	41.35	T13	T13	Yes
2	11344000	13.84	0.174	41.59	T13	T13	Yes
3	12441958	14.90	0.191	41.46	T13	T13	Yes
4	11988109	14.45	0.184	41.45	T18	T18	Yes
5	12988518	15.39	0.199	41.46	T18	T18	Yes
6	12283718	14.75	0.189	41.53	T18	T18	Yes
7	13220328	15.59	0.203	41.45	T21	T21	Yes
8	12662706	15.09	0.194	41.39	T21	T21	Yes
9	13320981	15.71	0.205	41.39	T21	T21	Yes
10	7371229	9.51	0.111	41.84	Negative	Negative	Yes
11	6301335	8.32	0.096	42.27	Negative	Negative	Yes
12	7138208	9.25	0.108	41.86	Negative	Negative	Yes

WGS

Sample: NA12878 gDNA Samples, 3 Replicates

Platform	Salus Pro			
	Sample	NA12878_Run01	NA12878_Run02	NA12878_Run03
Raw_Q30(%)		93.80	93.43	95.20
GC_content(%)		41.13	41.10	41.13
Duplication_rate(%)		5.24	5.34	5.17
Mapping_rate(%)		99.95	99.95	99.94
Mismatch_rate		3.94E-03	3.86E-03	3.77E-03
Depth		32.84	33.60	33.42
Coverage_1X(%)		99.01	99.01	99.03
Coverage_4X(%)		98.63	98.62	98.65
Coverage_30X(%)		61.62	60.48	63.96



Massive Scale of Academic and Industrial Applications

Healthcare	Public Safety	Research	Breeding	Environment	Consumer
<ul style="list-style-type: none"> • Early detection • Genetics • NIPT • PGT-A 	<ul style="list-style-type: none"> • Disease control • Customs • FDA/NMPA/EMA • Forensics 	<ul style="list-style-type: none"> • Animals • Plants • Biology • Medicine 	<ul style="list-style-type: none"> • Agriculture • Livestocks • Aquaculture 	<ul style="list-style-type: none"> • mNGS • eDNA 	<ul style="list-style-type: none"> • Ancestry • Sports • Wellness

Salus Pro Instrument Specifications

Parameter	Specifications	
Dimensions	1265 mm(W) × 700 mm(D) × 675 mm(H)	
Weight	210 KG	
Power Requirements	Input voltage	100V - 240V~
	Frequency	50 / 60Hz
	Power	1200VA
	Fuse	T15AH250V
Instrument Configuration	Type	Capacitive
	Display	21.5 inch
	Resolution	1920 × 1080
Operating Environment	Temperature	19°C - 25°C
	Humidity	20%RH - 80%RH (No condensation)
	Altitude	≤ 2000m
Instrument Control Computer	CPU	Intel Xeon® Silver 4216
	Storage	32 GB DDR4 * 4
	Memory	10 TB HDD * 4; 512 GB + 2048 GB SSD
	OS	Windows 10 x64
Maximum Sound Pressure	75 dB(A)	

After-sale Service

Salus Biomed or its authorized partners offer comprehensive after-sales services, including installation, commissioning, repairs, maintenance, technical support, and any other necessary assistance.

Free installation, commissioning, reagents and consumables for performance validation are available. The company reserved all the rights for final explanation.

72h

Sequencer Safety

The products comply with IEC6010-2010, IEC6010-2010 / AMD /:2016, IEC61010-2010: 2019, and IEC61010-2-081-2019.

Featuring a rounded shape design, Salus Pro is user-friendly for researchers and operators, significantly reducing the risk of scratching.

Crafted from flame-retardant and environmentally friendly materials, our instruments are designed for easy cleaning and sterilization with alcohol.

Salus Biomed

Empower and Cooperate

Salus Biomed was founded in Shenzhen, focusing on the development of high throughput genetic sequencing platform, and creating world's leading spatial omics research platform. The company is committed to the independent development of genomics and spatial genomics products, as well as translating research into clinical applications.



Sequencing Lab



Assembly Line



Enzyme Development



Office Area